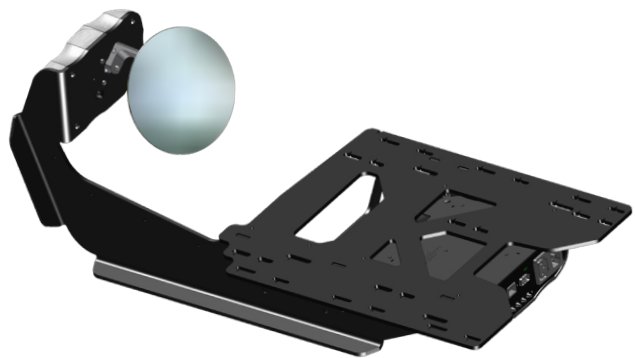


Promote
yourself.



DYNAMIC PROJECTION
INSTITUTE



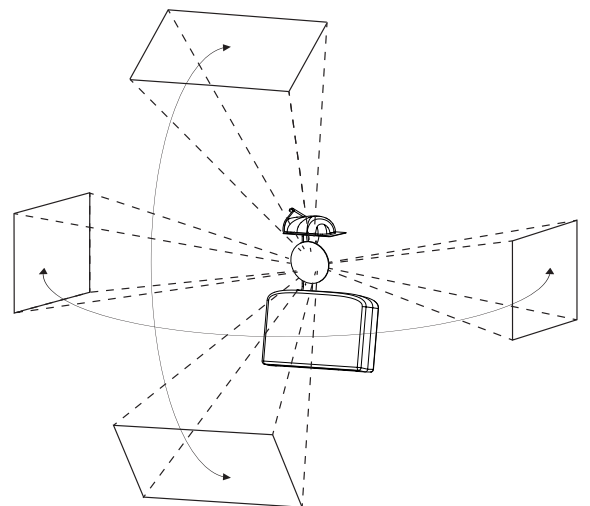
Mirror Head Christie GS Series

Item Number: MH11-L / MH11-85GSL

The Mirror Head is a modern high-tech mirror that is digitally operated and is used as an add-on feature for projectors. It can be set to move either rapidly or slowly to project pictures, videos and texts onto any imaginable surface.

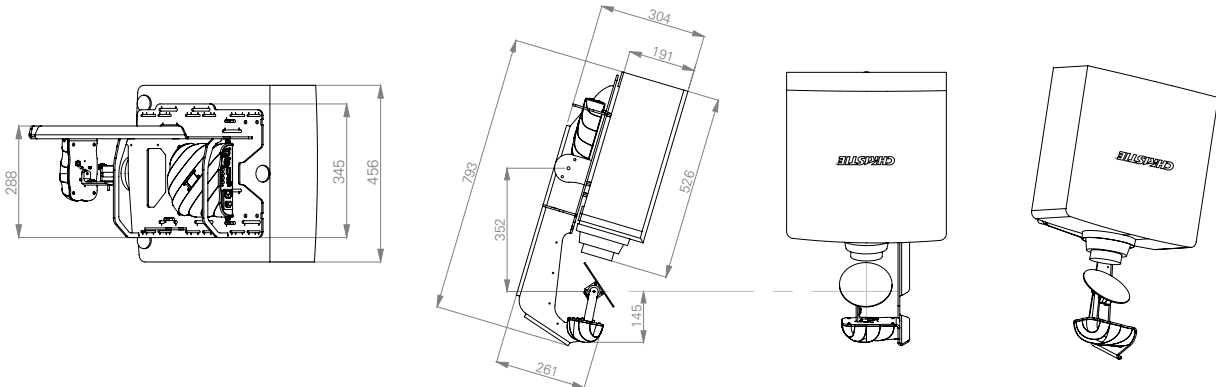
Through its high level of performance, the entire system guarantees highly accurate positioning. It is important to note that the Mirror Head is also extendable to almost every projector and a quality product made in Austria.

Static projection belongs to the past. The journey into a new visual experience begins here. Our technology paves the way to unprecedented possibilities in lighting, projection and interior design.





Technical Specifications MH11-L with Christie DWU635-GS



MECHANICAL SPECIFICATIONS

Fixture dimensions in mm (L/W/D):	793 x 456 x 304
Fixture total:	28 kg
Projector + Zoom Lens 140-102104:	16,5 kg
Mirror Head unit only:	11,5 kg

ELECTRICAL SPECIFICATIONS

Input Power:	100-240V / 2-1A / 50-60Hz,
Output Power:	Max. 10A (3-prong C14 male socket) AC loop trough for projector (3-prong C13 female socket) Max. 8A - cable included



Caution! There are no user serviceable parts (fuse) inside this unit.

PROJECTOR COMPATIBILITY MH11-L

Christie DHD630-GS	1920 x 1080	6000 ANSI Lumens
Christie DWU630-GS	1920 x 1200	6000 ANSI Lumens
Christie DHD635-GS	1920 x 1080	6000 ANSI Lumens
Christie DWU635-GS	1920 x 1200	6000 ANSI Lumens

And other models: DWX555-GS / DHD555-GS / DWU555-GS /
DHD599-GS / DWU599-GS

PROJECTOR COMPATIBILITY MH11-85GSL

Christie DHD850-GS	1920 x 1080	6900 ANSI Lumens
Christie DWU850-GS	1920 x 1200	7500 ANSI Lumens
Christie DWU1075-GS	1920 x 1200	9500 ANSI Lumens
Christie DHD1075-GS	1920 x 1080	8800 ANSI Lumens

And other models: DHD700-GS / DWU700-GS

Due to optical reasons we recommend a throw ratio over 1.7:1.

IMPORTANT NOTE: For information about the specifications, operations and use of the projector please read the instruction manual of the projector.
<https://www.christiedigital.com/emea/business/products/projectors/1-chip-dlp/gs-series>

OPERATION SPECIFICATIONS / FEATURES

- DMX-512 control over 14 DMX channels
- DMX IN / OUT port (5-pin male and female XLR connectors)
- Art-Net™ connection (RJ45) (Art-Net™ designed by and Copyright Artistic Licence Holdings Ltd.)
- Mirror Tilt modes: 90° & 162°
- Mirror Pan mode: 180°
- High resolution micro step motors with maintenance free direct drive
- Self calibrating mirror position for high accuracy
- Absolut reposition accuracy <0,03°
- Movement accuracy: Pan and Tilt from the same direction to the programmed point within approximately 0,01°
- RS232 remote control connection for projector (D-sub 9 male) - cable included
- Flashable firmware (Mini USB)
- High resolution LED-Display for easy configuration
- LED-Display backlight auto turn off for energy saving
- LED-Display Flip / Flop mode for easy reading in difficult positions
- Coated mirror for optimum reflection ~98% refraction factor
- Optimized mirror optics for the specific projector
- Ambient Light LED with high power 3 Colour LEDs (17,9 Watt total)
- High durability black powder-coating surface finishing
- Mounting plate optimized for specific projector mounting
- Easy to adjust mounting system
- Heavy-use truss or wall mounting supports
- Passive cooled system (excluding projector)
- Environmental tolerances: Ambient operating temperature range: 5°-35°C, Humidity: 20%-80% (non-condensing)
- Package includes: RS232 cable, AC-loop through cable, Quick installation guide



To protect the environment,
please try to recycle the packing
material as much as possible.

